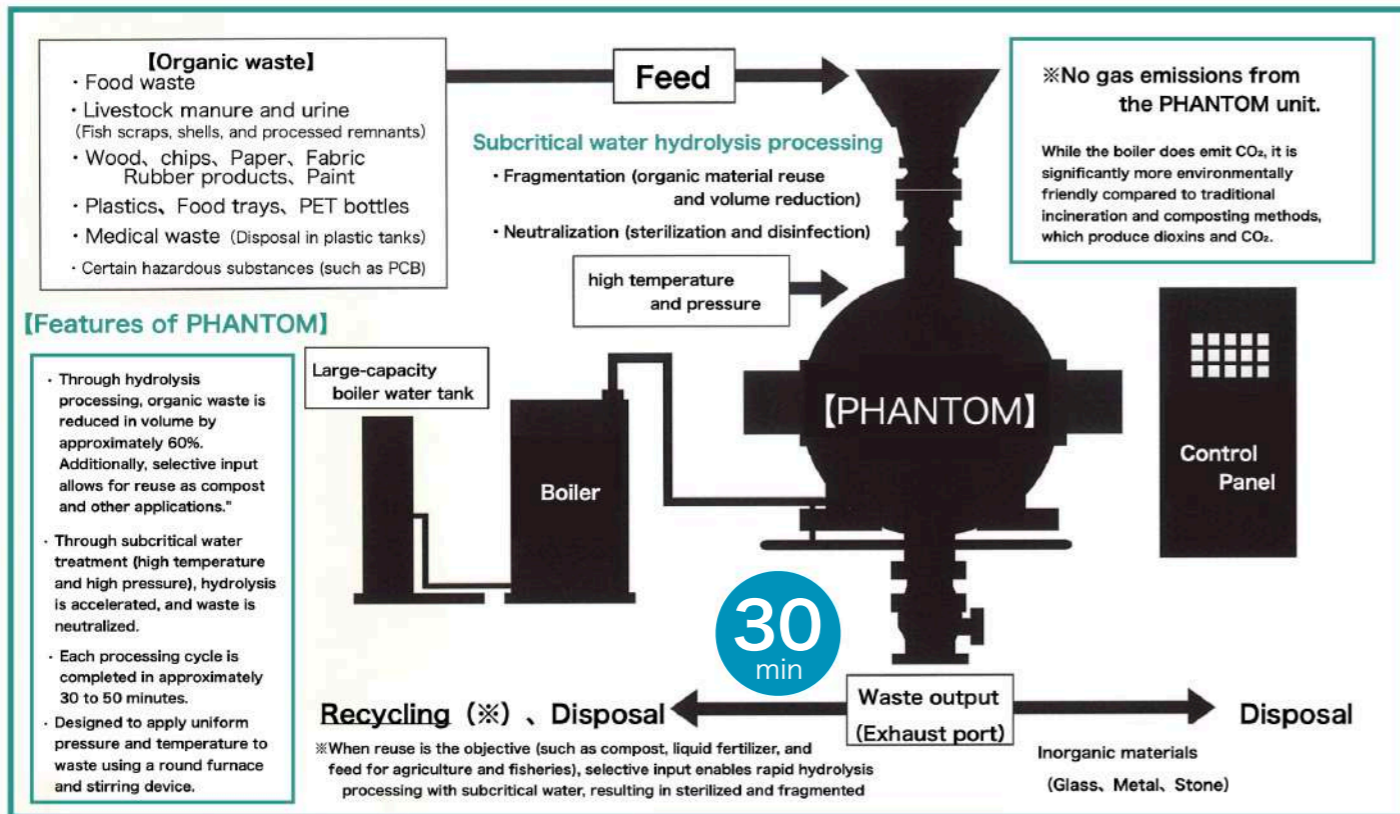


Subcritical water high-speed hydrolysis treatment system  
**[PHANTOM] Features and Functions**



Actual operating time is 15 minutes. This time is not included for putting in and taking out the waste . Estimated operating time is about 30 minutes. It is safer to calculate the time about 20-22 hours per day. If you are not used to it. You will definitely waste time putting in and taking out.

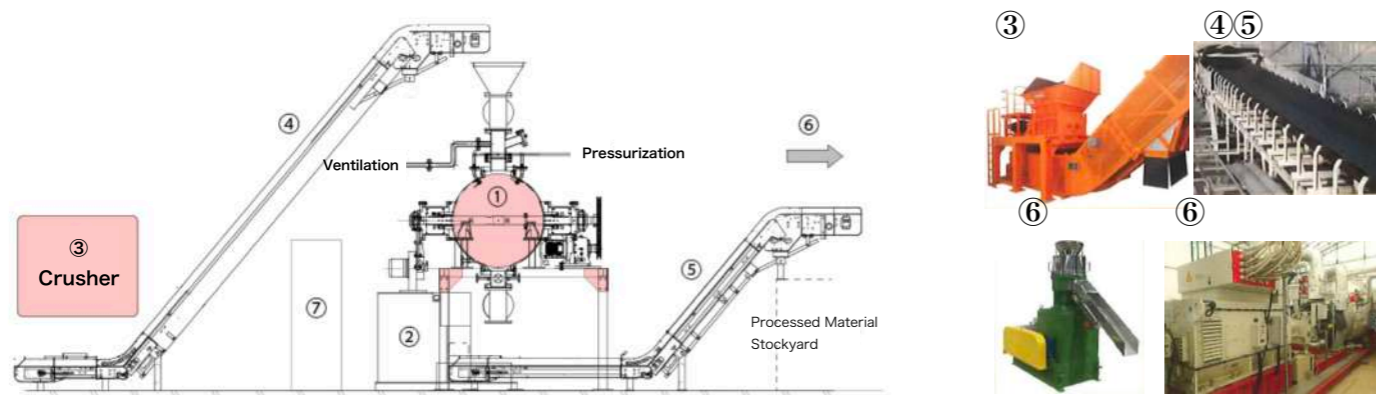
Quotation and Ordering of Circular Subcritical Water Hydrolysis Processing System



**JEP Corporation**

Level 8, Shinjuku Oak City Nittochi Nishi-Shinjuku Building 6-10-1, Nishi-Shinjuku, Shinjuku-ku Tokyo 160-0023 Japan

TEL : 81-3-5325-3049  
 E-mail : [hayata@jepgroup.co.jp](mailto:hayata@jepgroup.co.jp)



①PHANTOM (Main Unit)②Boiler③Crusher④Input Conveyor  
 ⑤Discharge Conveyor⑥Pellet, Power ⑦Generation & Other Production Lines Control Panel

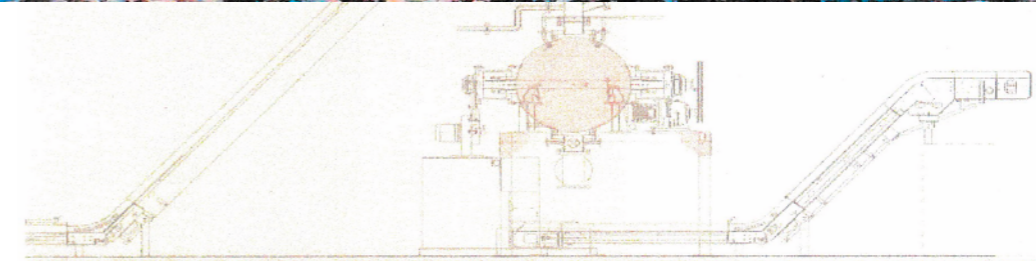
※Photo options vary in design and specifications depending on the input volume and intended use. (Reference example)

Subcritical water high-speed hydrolysis treatment system

Creating the Future from Waste

Organic Waste Treatment

**PHANTOM**



JEP corporation

New Era Technology

Subcritical Water Treatment

"Capable of Sterilizing and Neutralizing Input Materials. Also, Efficiently Reduces the Volume of General Plastic Waste."

Waste and CO<sub>2</sub> Reduction Measures

Challenges in Environmental Issues

Compared to conventional methods, PHANTOM provides an environmentally friendly solution. Additionally, it enables the rapid processing and reduction of waste volume in a short period.

Eco-friendly waste solutions

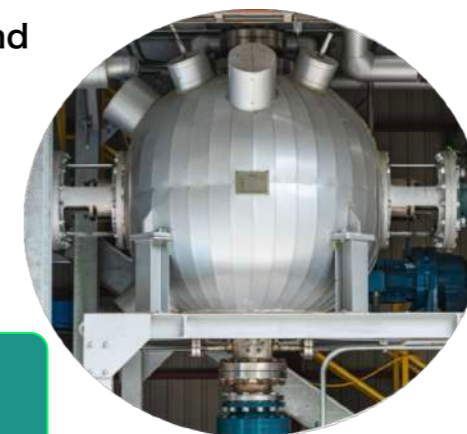
Hydrolysis

"Organic waste is hydrolyzed and broken down into smaller molecules using the power of water and heat. By selectively processing waste, it can be reused as compost, feed, or fuel."

Efficiency-Oriented Design

Round-Type Processing Furnace

A round shape is adopted to ensure uniform processing and facilitate easy removal of treated materials.



# The Benefits of PHANTOM

Various types of industrial waste



Processing and decomposing 3 tons of waste in 30 minutes.

Converted into harmless and sterile residue



Characteristic 1

- Sterilization
- Deodorization
- Low-molecularization

Organic waste treated by PHANTOM undergoes molecular decomposition, is rendered harmless, and is deodorized. Difficult-to-manage waste, such as medical waste, can also be processed efficiently. Organic materials are reduced in volume by approximately 60%.

Characteristic 2

Waste can be reused  
(Composting, feed production, fuel conversion, etc.)

By selectively inputting waste, the resulting decomposed organic matter can be repurposed as compost or livestock feed.

Characteristic 3

Extremely low environmental impact

The round-shaped, sealed processing furnace—manufactured with advanced technology—minimizes environmental impact to nearly zero.

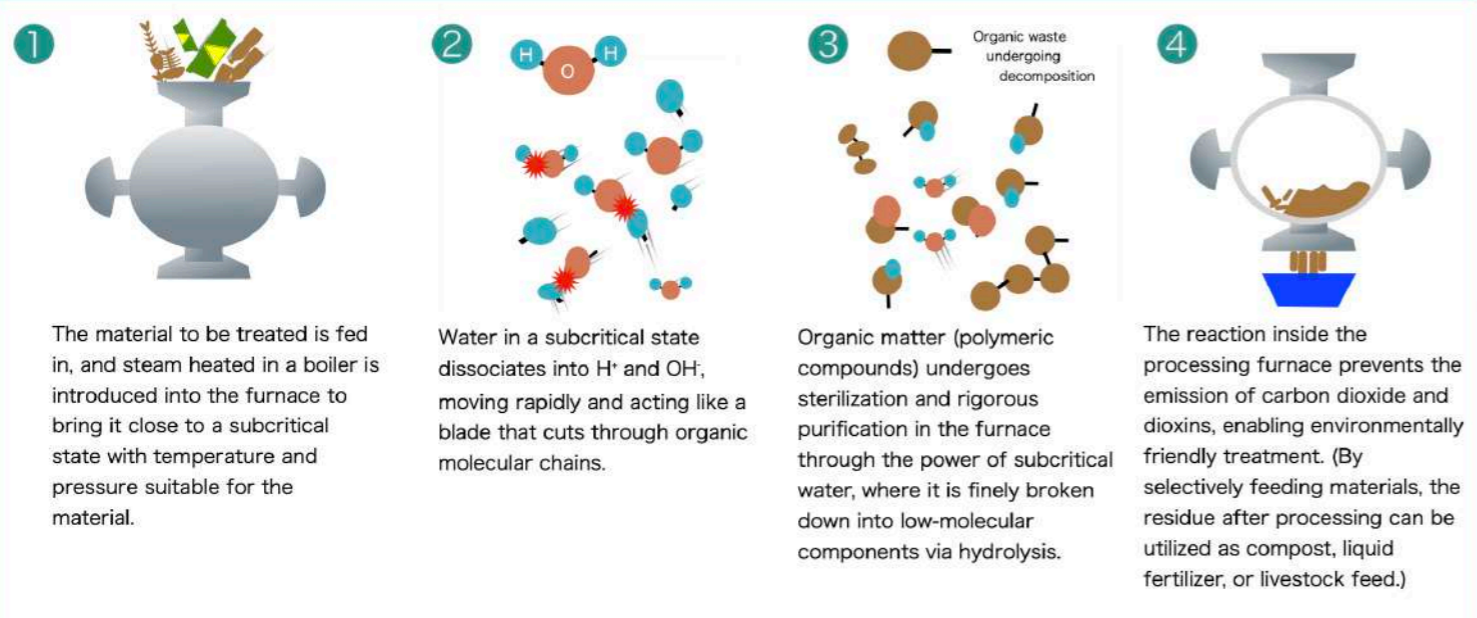
The only environmental burden comes from CO<sub>2</sub> emissions generated by the boiler.

Characteristic 4

Operational and maintenance costs are relatively low

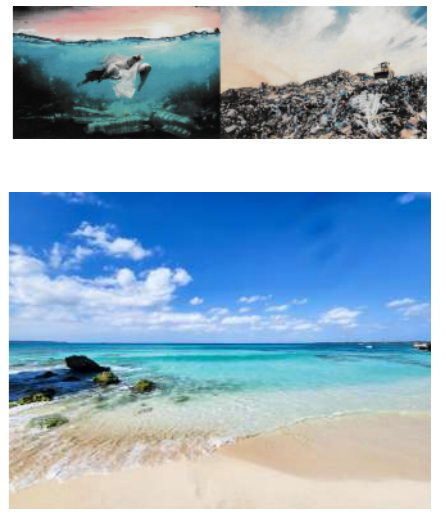
Operating costs are minimal, requiring only fuel expenses. With periodic inspections and gasket replacements every ten years, long-term operation is achievable.

## Basic Principles of PHANTOM ~About Subcritical Water and High-Speed Hydrolysis~



# Creating the Future from Waste

Modern society faces serious waste challenges—marine pollution, plastic waste, livestock excreta, and medical waste. To tackle these issues, we present PHANTOM. PHANTOM supports the realization of an environmentally friendly, circular society. Moving from 'disposal' to 'reuse.' Let's create the future together with PHANTOM.



## Waste Processing with PHANTOM

Processing Available

Compostable

- Organic waste from livestock and fisheries
- Livestock manure and urine
- Paper, wood scraps, and clothing

Reducible

- Plastic
- PEs/PET, PE, PP, PS (Food containers, Food trays)

• Harmful substances such as PCBs※

※Only materials that can undergo hydrolysis

Not compostable or reducible

- Metal
- Stone
- Glass

etc

※Please discuss the intended use during the consultation. We will propose, design, and manufacture solutions that meet your requirements.

## A comparative analysis of [PHANTOM] and traditional systems processing

incinerator	(project)	PHANTOM	PHANTOM	(project)	Compost/natural decomposition
With emissions	Smoke, toxic gases & odors	No emissions	Organic waste and plastics	object	Organic waste and plastics
Incineration ash	Residue after treatment	Can also be reused	plant yard	land (space)	vast land
A significant financial burden	Construction and maintenance costs	About a few percent of large incinerators	30-50 minutes	processing time	Months to thousands of years
considerable fuel costs	running cost	small fuel cost	Finely granulated compost and liquid fertilizer	product	Compost is the main
not clear	Durability	Regular inspection (boiler) and packing replacement about once every 10 years	No pollution (CO <sub>2</sub> from boiler)	environmental pollution	Dioxins, odors, soil contamination
Adding more fuel	Garbage with high moisture content	Water treatment - no additional fuel			
driving is affected	Doing with the amount of garbage	Driving is not affected			